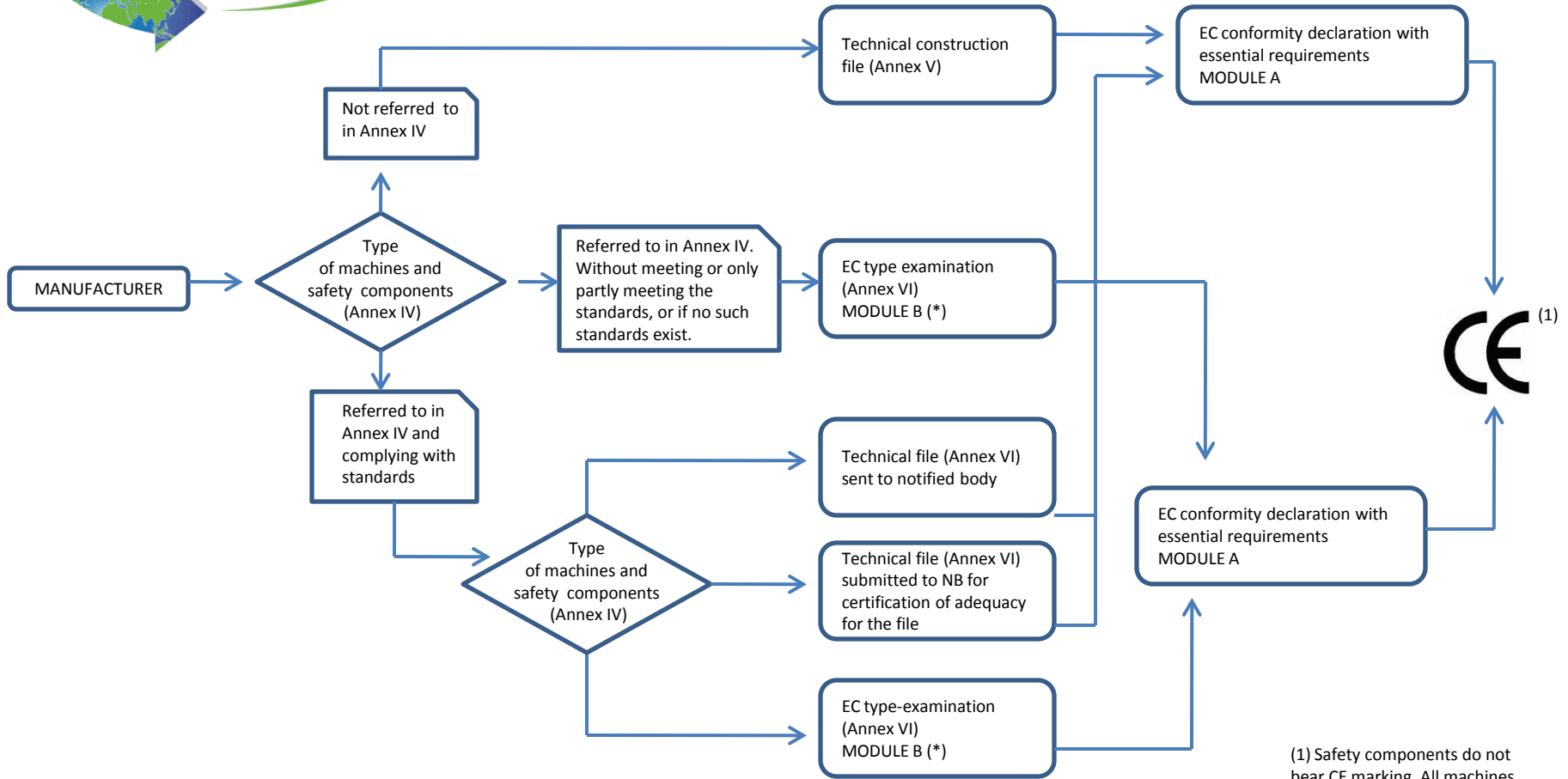




Flow chart for the conformity assessment procedures provided for in Directive 98/37/EC on machinery



(1) Safety components do not bear CE marking. All machines and safety components must be accompanied by the EC declaration of conformity.

(\*) These procedures were approved before the adoption of Council Decision 90/683/EEC (as amended by Decision 93/465/EEC) on conformity assessment procedures (modules). Their provisions may therefore not be identical to those of the modules.